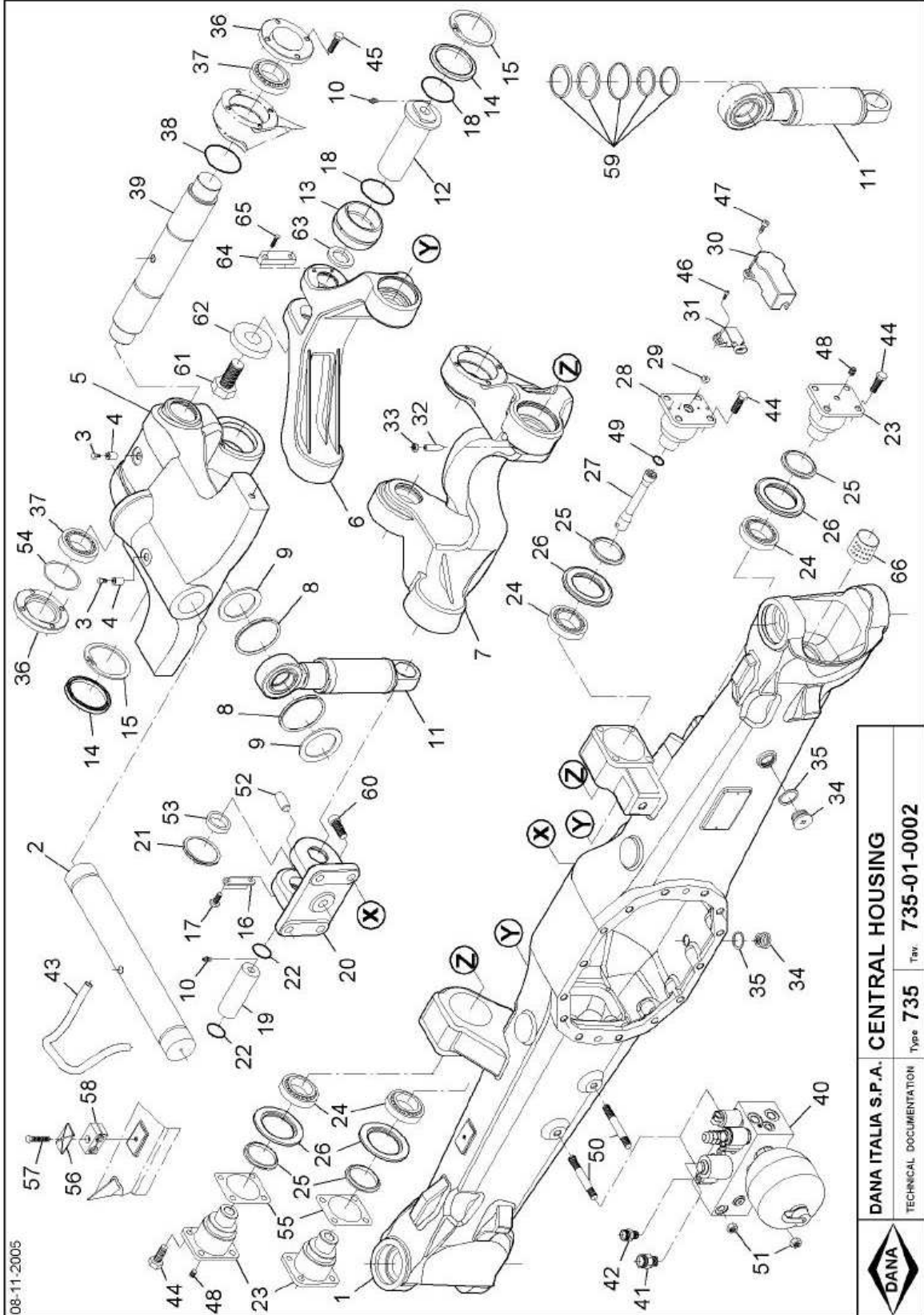


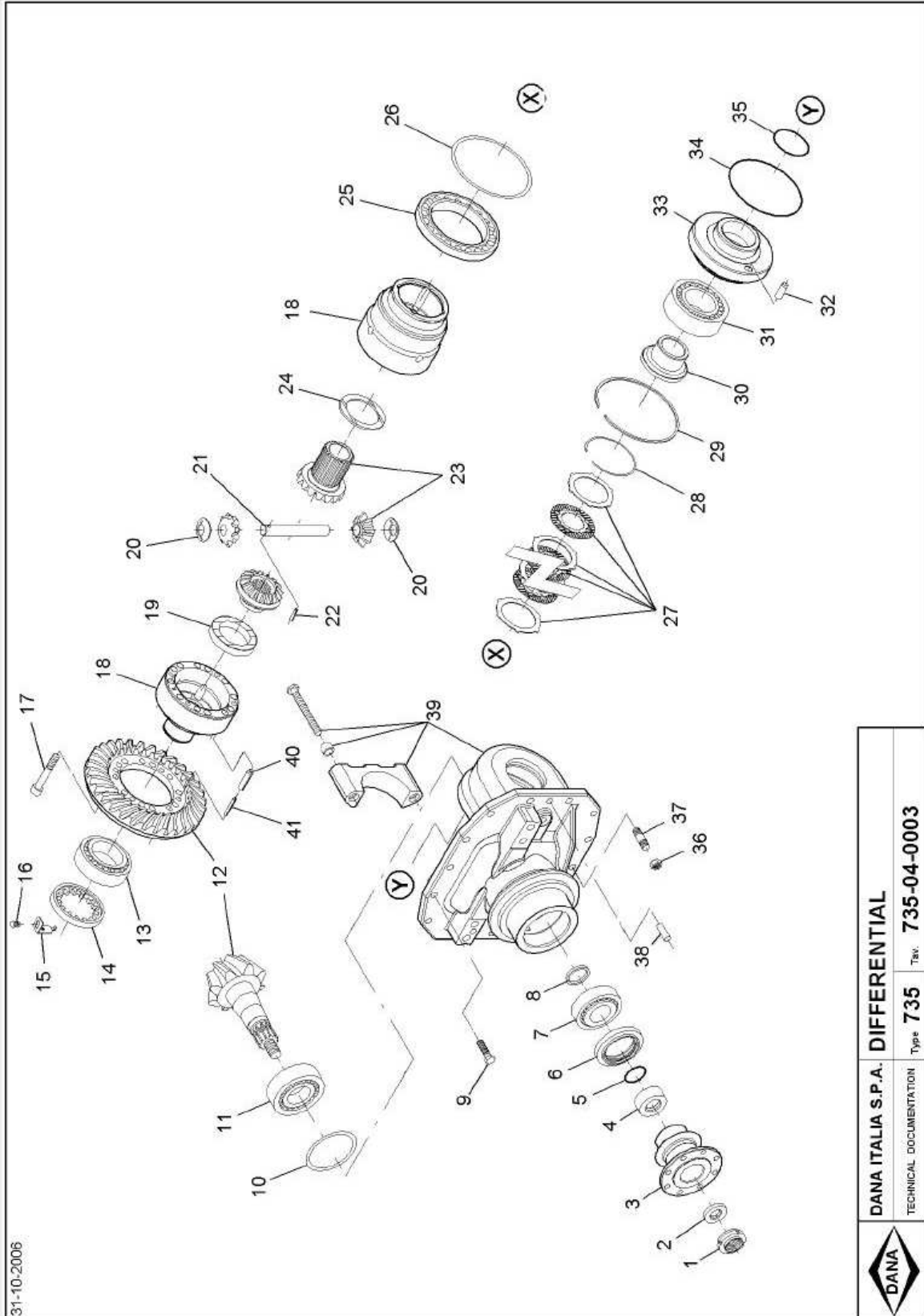
# VUES NUES PONT DANA N° 735-604

Vue n° 1



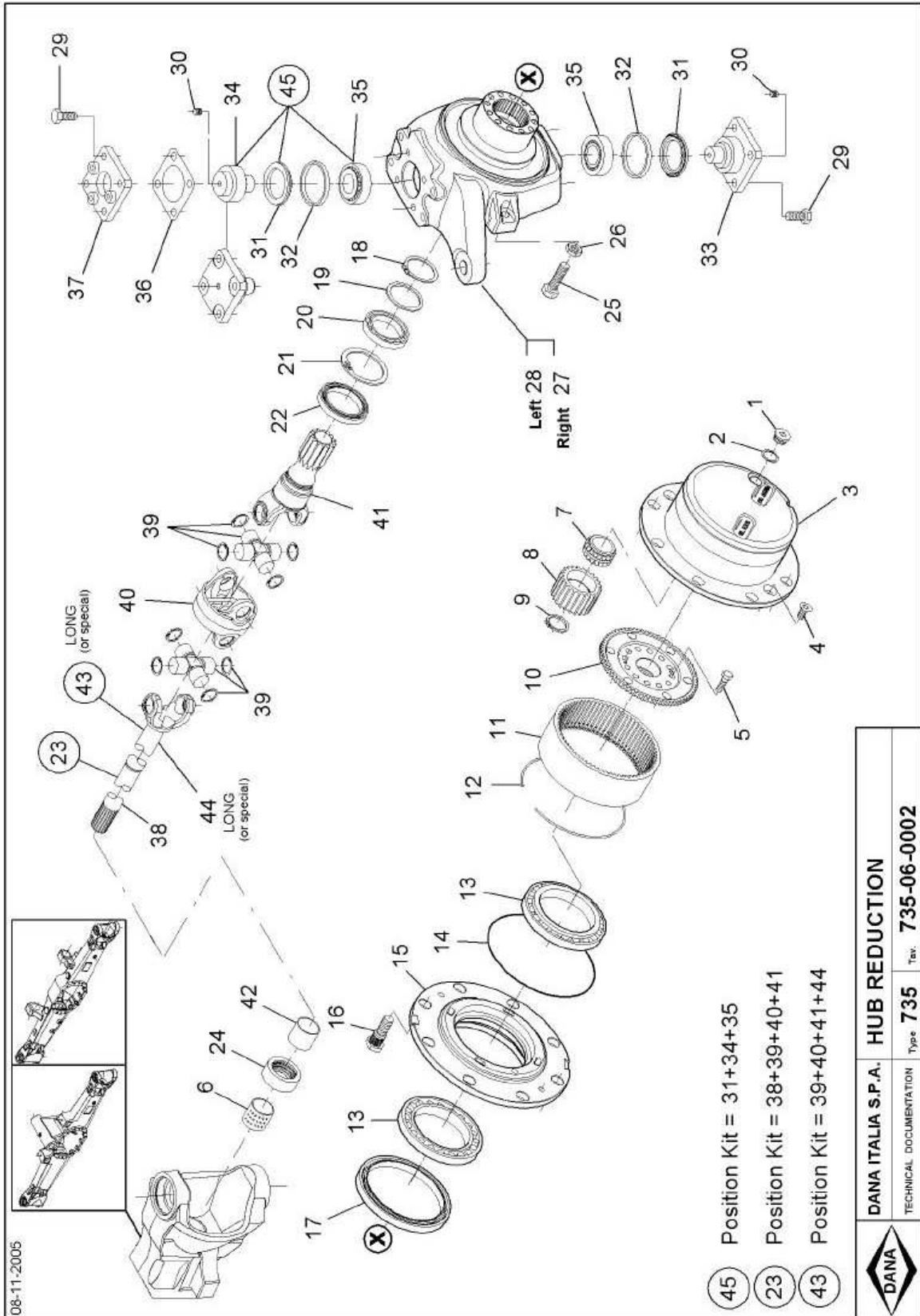
08-11-2005

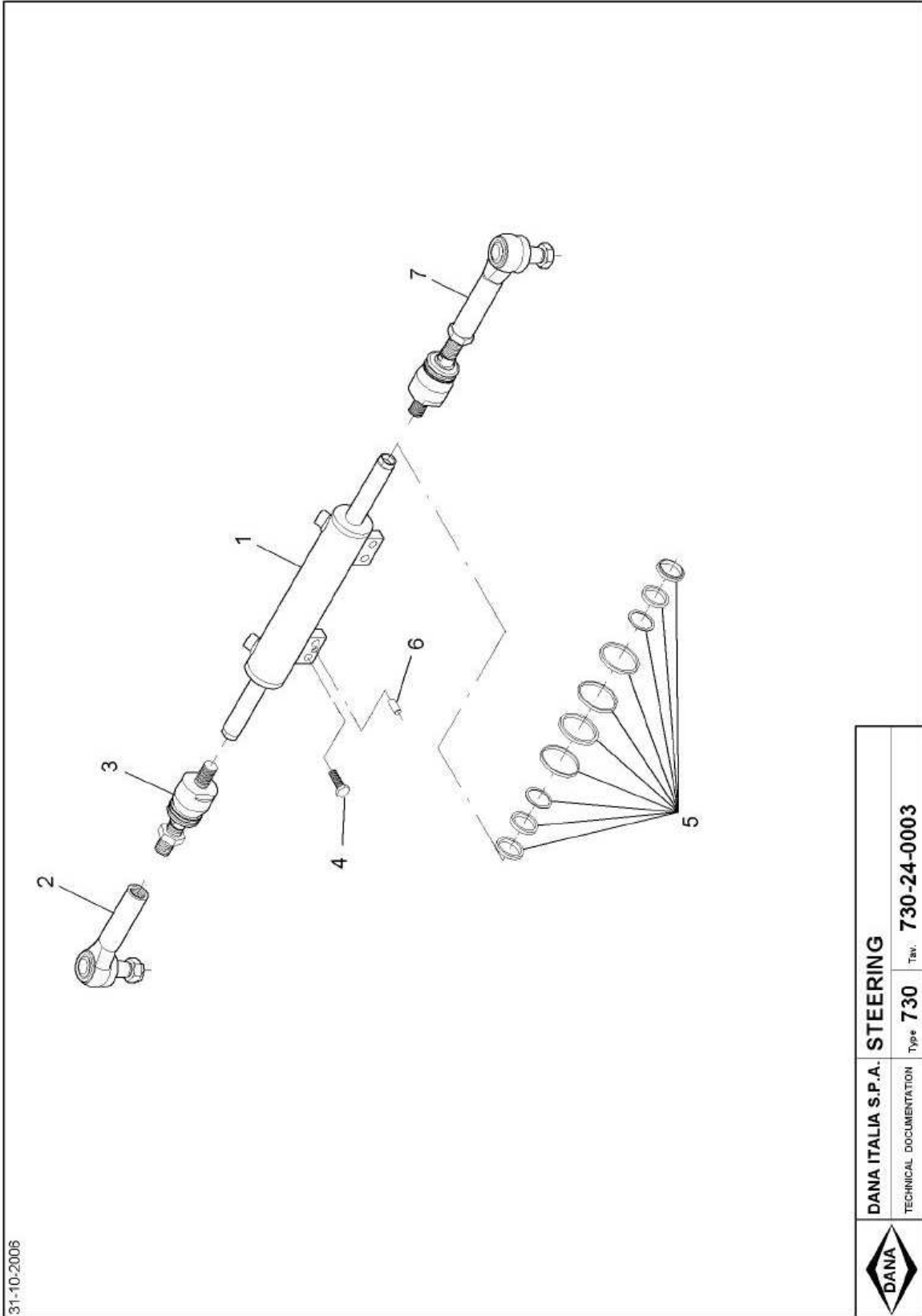
	<b>DANA ITALIA S.P.A. CENTRAL HOUSING</b>	
	TECHNICAL DOCUMENTATION	Type 735 Tav. 735-01-0002



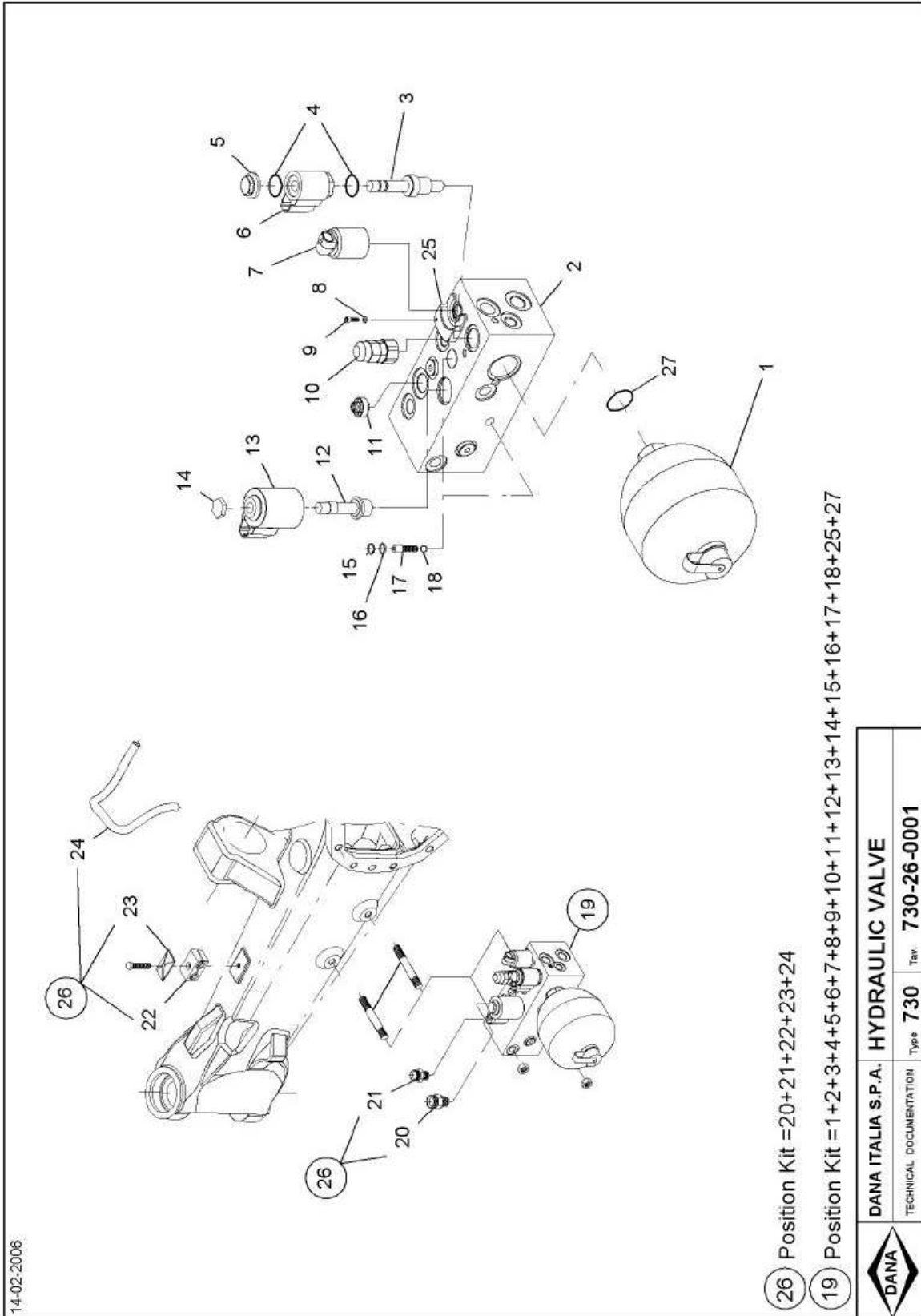
31-10-2005

	<b>DANA ITALIA S.P.A. DIFFERENTIAL</b>
	TECHNICAL DOCUMENTATION
Type <b>735</b>	Tax. <b>735-04-0003</b>





	<b>DANA ITALIA S.P.A.</b>	<b>STEERING</b>
	TECHNICAL DOCUMENTATION	Type: <b>730</b> Tav. <b>730-24-0003</b>



14-02-2006

26 Position Kit =20+21+22+23+24

19 Position Kit =1+2+3+4+5+6+7+8+9+10+11+12+13+14+15+16+17+18+25+27

	<b>DANA ITALIA S.P.A. HYDRAULIC VALVE</b>	
	TECHNICAL DOCUMENTATION	Type <b>730</b> Tav. <b>730-26-0001</b>